

# American Herbal Pharmacopoeia®

## Editors and Technical Advisors

Roy Upton RH DAYu  
American Herbal Pharmacopoeia®  
Scotts Valley, CA

Lyle Craker PhD  
University of Massachusetts  
Amherst, MA

Mahmoud ElSohly PhD  
University of Mississippi  
University, MS

Aviva Romm MD CPM  
American Herbal Pharmacopoeia®  
Lennox, MA

Ethan Russo MD  
GW Pharmaceuticals  
Salisbury, UK

Michelle Sexton ND BS  
Americans for Safe Access  
Washington, DC  
The Center for the Study of Cannabis  
and Social Policy  
Seattle, WA

## Research Associates

Jahan Marcu PhD  
Green Standard Diagnostics  
Henderson, NV

Diana Swisher MA  
American Herbal Pharmacopoeia®  
Scotts Valley, CA

## *Cannabis Inflorescence* *Cannabis spp.*

STANDARDS OF IDENTITY, ANALYSIS, AND  
QUALITY CONTROL



# TABLE OF CONTENTS

<b>Nomenclature</b>	<b>2</b>	<b>Constituents</b>	<b>32</b>
Botanical Nomenclature			
Botanical Family			
Pharmaceutical Nomenclature			
Pharmacopoeial Definition			
Common Names			
<b>Identification</b>	<b>2</b>	<b>Analytical</b>	<b>40</b>
Botanical Identification		Thin-Layer Chromatography (TLC)	
Macroscopic Identification		High Performance Liquid Chromatography (HPLC)	
Organoleptic Characterization		Gas Chromatography with Flame Ionization Detection (GC-FID)	
Microscopic Identification		Limit Tests	
		Foreign Organic Matter	
		Total Ash	
		Acid-insoluble Ash	
		Loss on Drying	
		Pesticide Limits	
		Microbial and Fungal Limits	
		Metal Limits	
		Solvent Residues	
<b>Commercial Sources and Handling</b>	<b>18</b>	<b>International Status</b>	<b>51</b>
Sourcing			
Cultivation			
Harvest			
Drying			
Packaging			
Storage			
Natural Contaminants and Adulterants			
Qualitative Differentiation			
Sustainability and Environmental Impact			
Documentation of Supply			
Growing and Harvesting Guidelines			
Security			
Suppliers and Dispensaries			
		<b>References</b>	<b>55</b>

PREVIEW OF COMPLETE MONOGRAPH  
COMPLETE MONOGRAPH 64 PAGES

## Legal Notification

The following Standards of Identity, Analysis, and Quality Control of *Cannabis* are intended to provide scientifically valid methods for the analysis of cannabis and its preparations that can be used to comply with state and federal regulations and policies. The analytical methods were obtained from peer reviewed literature, have been used as part of international or federal monitoring programs for cannabis, and have been verified for their scientific validity. Methods other than those presented in this monograph may be scientifically valid and provide reliable results. However, all methods must be verified as being scientifically valid prior to use for regulatory compliance.

In the United States, cannabis is a Schedule I controlled substance under federal law; therefore, any use or possession of cannabis and its preparations is illegal except pursuant to the compassionate use Investigational New Drug exemption. These standards are not intended to support, encourage or promote the illegal cultivation, use, trade, or commerce of cannabis. Individuals, entities and institutions intending to possess or utilize cannabis and its preparations should consult with legal counsel prior to engaging in any such activity.

The citing of any commercial names or products does not and should not be construed as constituting an endorsement by the American Herbal Pharmacopoeia. Additionally, the reliability, and therefore ability to comply with state or federal regulations, of any conclusions drawn from the analysis of a sample is dependent upon the test sample accurately representing the entire batch. Therefore, when performing all analytical tests, a formal sampling program must be employed.

## Authors

### Botanical Identification

Mahmoud ElSohly PhD  
Suman Chandra PhD  
Hemant Lata PhD  
University of Mississippi  
University, MS

### Macroscopic Identification

Suman Chandra PhD  
Hemant Lata PhD  
Mahmoud ElSohly PhD  
University of Mississippi  
University, MS

### Microscopic Identification

Suman Chandra PhD  
Hemant Lata PhD  
Mahmoud ElSohly PhD  
University of Mississippi  
University, MS

Elizabeth Williamson PhD  
University of Reading  
Reading, UK

### Commercial Sources and Handling

Suman Chandra PhD  
Hemant Lata PhD  
University of Mississippi  
University, MS

Roy Upton RH DAyu  
American Herbal Pharmacopoeia  
Scotts Valley, CA

### Constituents

Mahmoud ElSohly PhD  
Desmond Slade PhD  
University of Mississippi  
School of Pharmacy  
University, MS

### Analytical

*Thin-Layer Chromatography (TLC)*  
*Gas Chromatography (GC)*  
Mahmoud ElSohly PhD  
Desmond Slade PhD  
Mohammed M Radwan PhD  
University of Mississippi  
University, MS

*High Performance Liquid Chromatography (HPLC)*  
Kong M Li PhD  
University of Sydney  
Sydney, NSW

### Reviewers

Wendy Applequist PhD  
Missouri Botanical Gardens  
St. Louis, MO

Paula Brown PhD  
British Columbia Institute of  
Technology (BCIT)  
British Columbia, Canada

Rudolf Brenneisen  
University of Bern  
Bern, Switzerland

Mike Corral  
Wo/Men's Alliance for Medical  
Marijuana  
Santa Cruz, CA

Staci Eisner  
Cannabis Committee  
American Herbal Products  
Association  
Silver Spring, MD

Daniel Harder PhD  
Museum of Natural History  
Santa Cruz, CA

Erik W Johansen  
Special Pesticide Registration  
Program Coordinator

Washington State Department of  
Agriculture  
Olympia, WA

James Kababick  
Flora Research Laboratories  
Grants Pass, OR

ao Prof Dr Liselotte Kren  
University of Vienna  
Vienna, Austria

Prof Dr Reinhard Länger  
AGES Pharm Med  
Vienna, Austria

Etienne de Meijer  
GW Pharmaceuticals  
Salisbury, UK

David Potter PhD  
GW Pharmaceuticals  
Salisbury, UK

Eike Reich PhD  
CAMAG  
Muttentz, Switzerland

Jeanette Roberts PhD, MPH  
University of Wisconsin  
Madison, WI

Steph Shaffer  
American for Safe Access (ASA)  
Washington, DC

Sil Schoenbar, Dc, PhD  
Five Branches University  
Santa Cruz, CA

Amal Sathyanath PhD  
Oregon Health and Science  
University  
Portland, OR

Elan Sudberg  
Costa Mesa, CA

Elizabeth Williamson PhD  
University of Reading  
Reading, UK

Hugh Watson  
Marijuana Agricultural Chemical  
Specialist  
Washington State Liquor Control  
Board  
Olympia, WA

### Final Reviewers

Giovanni Appendino Laurea  
Department of Pharmaceutical  
Sciences  
University of the Eastern Piedmont  
Novara, Italy

Vincenzo L. Marzo PhD  
Endocannabinoid Research Group  
(ERCA)  
Institute of Biomolecular Chemistry  
(ICB)  
Consiglio Nazionale delle Ricerche  
(CNR)  
Pozzuoli (NA), Italy

Raphael Mechoulam PhD  
Hebrew University of Jerusalem  
Jerusalem, Israel

Jonathan Page PhD  
National Research Council  
Saskatoon, Canada

Ethan Russo MD  
GW Pharmaceuticals  
Salisbury, United Kingdom

Maged Sharaf PhD  
American Herbal Products  
Association  
Silver Spring, MD

Michael Steenhout  
Washington State Liquor Control  
Board  
Olympia, WA

ISBN: 1-929425-33-3 ISSN: 1538-0297

© 2013 American Herbal Pharmacopoeia®  
PO Box 66809, Scotts Valley, CA 95067 USA

All rights reserved. No part of this monograph  
may be reproduced, stored in a retrieval system,  
or transmitted in any form or by any means with-  
out written permission of the American Herbal  
Pharmacopoeia®.

The American Herbal Pharmacopoeia® is a  
nonprofit corporation 501(c)(3). To purchase  
monographs or botanical and chemical refer-  
ence standards, contact the American Herbal  
Pharmacopoeia® • PO Box 66809 • Scotts Valley,  
CA 95067 • USA • (831) 461-6318 or visit the AHP  
website at [www.herbal-ahp.org](http://www.herbal-ahp.org).

### Medical Disclaimer

The information contained in this monograph  
represents a synthesis of the authoritative scien-  
tific and traditional data. All efforts have been  
made to ensure the accuracy of the information  
and findings presented. Those seeking to utilize  
botanicals as part of a health care program should  
do so under the guidance of a qualified health care  
professional.

### Statement of Nonendorsement

Reporting on the use of proprietary products  
reflects studies conducted with them and is not  
meant to be a product endorsement.

### Design & Layout

Michael Parisi  
Aptos, CA

### Cover Photograph

*Cannabis* cultivated under the Compassionate  
Investigational New Drug program at the University  
of Mississippi administered by the National  
Institute on Drug Abuse (NIDA). Photograph  
courtesy of: University of Mississippi.



American Herbal Pharmacopoeia®

PO Box 66809  
Scott's Valley, CA 95067  
831-461-6318  
[www.herbal-ahp.org](http://www.herbal-ahp.org)  
[ahp@herbal-ahp.org](mailto:ahp@herbal-ahp.org)



2e.



2f.



2g.



2h.

**Figure 2 (continued) Botanical characteristics of cannabis inflorescences**

- 2e. Maturing female inflorescence showing young yellow styles and stigmas (often referred to as “pistils”).
- 2f. Close-up of maturing female inflorescence showing young yellow styles and stigmas senescing brown and shriveling and an abundance of glandular trichomes.
- 2g. Female inflorescence with senesced reddish-brown styles and stigmas, an indicator of inflorescence maturity.
- 2h. Close-up of female inflorescence with senesced reddish-brown styles and stigmas.

hemp, narrow-leaf drug, etc. to account for the plasticity represented in the genus.

*Cannabis* is a member of the *Cannabaceae* family, together with another well-known member of the family, hops (*Humulus*). The family has recently been expanded to contain 9 other genera (Stevens 2001). The following describes the published range of morphological diversity within plants recognized as *Cannabis* spp.

#### Morphological Characterization of *Cannabis* L.

Herbaceous annual, taprooted (taproot not developed on vegetatively propagated/cloned plants). Plants dioecious

(male and female flowers occur on separate plants) and rarely monoecious (male and female flowers occur on the same plant). Monoecious plants are often referred to as “hermaphrodites.” True hermaphrodites bear bisexual flowers and are less common, whereas monoecious plants bear unisexual male and female flowers at different locations on the plant. Staminate (male) plants tend to be taller but less robust than pistillate (female) plants. Height and degree of branching depends on both genetic and environmental factors (UNODC 2009). **Stem:** Erect, furrowed, often hollow, 0.2–6 m (usually 1–3 m) tall, simple to well branched; branchlets densely pubescent; staminate (male) plants usually taller and less robust, compared with pistillate (female)



6a.



6b.



6c.



6d.



6e.



6f.

**Figure 6** Macroscopic characteristics of cannabis inflorescence

- 6a. Dried, untrimmed pistillate inflorescences of morphological type "sativa."
- 6b. Dried pistillate inflorescences of morphological type "sativa" (bottom – untrimmed; top – trimmed).
- 6c. Storage effects on color of cannabis material (left – 1-year-old; right – new harvest).
- 6d. Dried pistillate inflorescences of morphological type "indica" (bottom – untrimmed; middle and top – trimmed).
- 6e. Close-up of a dried pistillate inflorescence (note the visible glandular trichomes).
- 6f. Powdered dry cannabis material (leaves and pistillate inflorescences).

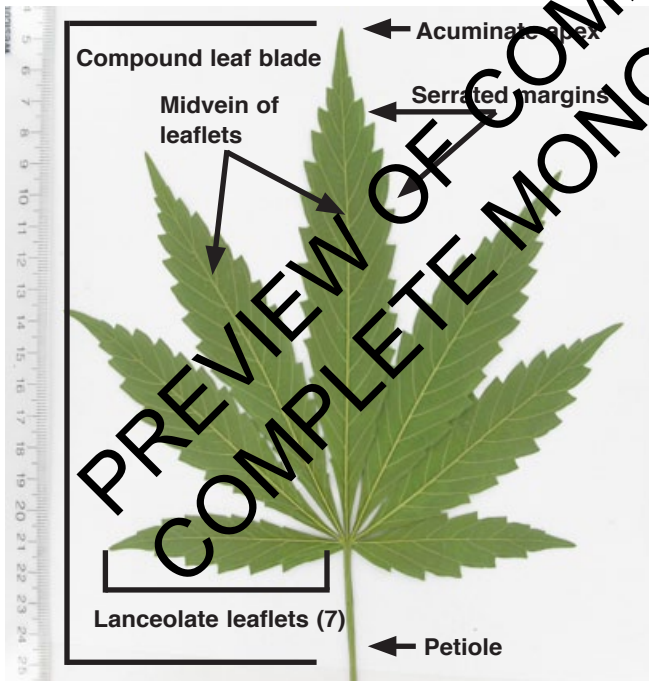
Photographs courtesy of: (6a–e) WAMM, Santa Cruz, CA; (6f) University of Mississippi, University, MS.



3a.



3b.



3c.



3d.

**Figure 3** Botanical characteristics of cannabis leaf

3a. Adaxial (upper) surface of a typical cannabis leaf (9 leaflets).

3b. Adaxial (upper) surface of a typical cannabis leaf (5 leaflets).

3c. Adaxial (upper) surface of a typical cannabis leaf with morphological characteristics highlighted.

3d. Abaxial (lower) surface of a typical cannabis leaf.

## Natural Contaminants and Adulterants

Due to its widespread cultivation, there is little concern for adulteration of the plant itself. However, the large economic potential and illicit aspect of cannabis has given rise to a number of reported potentially hazardous natural contaminants or artificial adulterants in crude cannabis and cannabis preparations.

**Natural contaminants:** Several plant species have morphological characteristics comparable to *Cannabis sativa*, e.g., *Hibiscus cannabinus* (kenaf), *Acer palmatum* (Japanese maple), *Urtica cannabina* (a Asian species of nettle), *Dizygotheca elegantissima* (false aralia), *Potentilla recta* (sulphur cinquefoil, rough-fruited cinquefoil), and *Datisca cannabina* (false hemp), leading to occasional contamination of cannabis internationally (UNODC 2009). However, these plants can be readily differentiated from cannabis by inspection of their macroscopic and microscopic characteristics. More commonly, natural contaminants consist of degradation products, microbial (fungi and bacteria) contamination, and heavy metals. These contaminants are usually introduced during cultivation and storage (McLaren et al. 2008; McPartland 2002).

**Adulterants:** Growth enhancers and pest control chemicals, introduced during cultivation and storage, are possible risks to the producer and the consumer. There are anecdotal reports of the use of banned substances such as daminozide (Alar), the degradation product of which is the highly toxic hydrazine. Cannabis can also be contaminated for marketing purposes. This usually entails adding substances, e.g. tiny glass beads, to increase the weight of the cannabis product, or adding psychotropic substances (e.g., tobacco, calamus (*Acorus calamus*), and other cholinergic compounds, to enhance the efficacy of low quality cannabis or to alleviate the side effects of cannabis (McPartland et al. 2008; McPartland 2008).

In the Netherlands, chalk and sand have been used to make cannabis appear to be of higher quality, the sand giving the appearance of trichomes. In the UK, similar adulterations have been made by adding glass beads with a similar diameter to trichome resin heads to cannabis (Randerson 2007). In Germany, lead has intentionally been added to street cannabis to increase its weight. Lead is readily absorbed upon inhalation and this adulteration resulted in lead intoxication in at least 29 users (Busse et al. 2008). Additionally, in the Netherlands, two chemical analogs of sildenafil (Viagra) were found in cannabis samples. In the UK, other contaminants including turpentine, tranquilizers, boot polish, and henna, among others, have been reported (Newcombe 2006).

In recent years, various products laced with synthetic cannabinoids have appeared on the market. These are believed to mimic the effects of cannabis. These products are known by various names (e.g., “Spice” and “K2”) and can be sold as “incense” or “natural smoking blends”.

Like cannabis, these synthetic cannabinoids are schedule I restricted substances. The Spice blend is reported to contain synthetic cannabinoids with a mixture of otherwise legal, safe, and non-psychotropic herbal dietary supplement ingredients including: damiana (*Turnera diffusa*), Chinese motherwort (*Leonurus sibirica*), and water lily (*Nymphaea caerulea*). According to the National Institute on Drug Abuse (NIDA 2012), those using some of these various blends have been admitted to Poison Control Centers and report “rapid heart rate, vomiting, agitation, confusion, and hallucinations. Spice can also raise blood pressure and cause reduced blood supply to the heart (myocardial ischemia), and in a few cases it has been associated with heart attacks. Regular users may experience withdrawal and addiction symptoms.”

## Qualitative Differentiation

Cannabis that is to be used for medicinal purposes should be as free from foreign matter as practically possible (see Limit Tests). Medicinal material should be free of mold and bacteria that have a high likelihood of pathogenicity (e.g. *Aspergillus*, *E. coli* (O157:H7)), visible mold should be absent, material should be free of stems greater than 1.5 cm, only subtending leaves should be present, material should be free of metals to the degree allowed by a naturally occurring growing substrate, and free of pesticides and fungicides that can present a health hazard to the consumer. Microbial standards should be adopted based on those required for non-sterile pharmaceutical preparations for use by inhalation (see European Pharmacopoeia 5.1.4). Color should be consistent throughout each sample and should not show signs of grey or black, which are indicators of fungal infection.

For medical users of crude cannabis, there is a balance sought between organoleptic qualities (taste and aroma) and medicinal effect, as well as a balance between THC- and CBD-yielding cultivars. Many cultivators select, breed, and process for these varying qualities. For medicinal purposes an optimal ratio between total THC,  $\Delta^9$ -THC, and/or CBD has not been definitively determined. Different health conditions may respond differently to plants containing different ratios of the two primary cannabinoids. For example, there is evidence to suggest that CBD is responsible for some of the putative anxiolytic effects (Mechoulam et al. 2002; Zuardi et al. 2002) of the plant, while  $\Delta^9$ -THC has been associated with appetite stimulation (Dejesus et al. 2007; Nelson et al. 1994). The process of trimming is done both for yielding higher concentrations of  $\Delta^9$ -THC and for yielding more desirable, organoleptic qualities, since the leaves possess a sharp and bitter organoleptic characteristic. A better organoleptic profile may enhance compliance.

Dispensaries should maintain strict quality control practices to ensure the purity and quality of their material by contracting for testing with independent labs that apply independently verified testing methodologies and transparent testing

standards. Individual growers and care givers producing medical cannabis for personal use should employ good agricultural practices (GAPs) to the extent possible in all aspects of growing, harvesting, drying, and storage.

## Sustainability and Environmental Impact

As all cannabis is derived from cultivated sources, there is little risk of the plant becoming environmentally threatened unless aggressive eradication programs are implemented worldwide. However, without development, implementation, and enforcement of Good Agricultural Practices (GAPs), both the indoor and outdoor production of cannabis can have significant negative environmental and social impacts. Environmentally, the illegal diversion of water, clear cutting of trees, dumping of chemicals, misappropriation of state and federal lands, and disruption of sensitive ecosystems are associated with outdoor cultivation, while high carbon emissions are associated with indoor production. In North America, especially with crops grown indoors, part of this environmental impact is driven by the illegality of cannabis cultivation that requires growers to hide crops. Others may choose indoor growing for greater control over crops and higher yields. The high-energy intensive processes associated with controlling all aspects of the indoors growing environment has been estimated to consume 1% of the national electricity use. Whether by regulation or choice, growers should apply GAPs to cannabis cultivation.

In addition to the impacts of cannabis cultivation the manufacture of butane extracts poses significant risk. A number of explosions and fires associated with home cannabis extract production have been reported, some that have included injury. Some butane contains compounds that may not be desirable in finished product. Extraction with Co<sub>2</sub> (sub- or super-critical) is preferred by some as the one environmentally safe extracting option.

## Documentation of Supply

For cannabis that is to be used in medicinal preparations, every aspect of cultivation, harvest, processing, and storage should be documented to the fullest extent possible. Various county and state ordinances require adherence to specific regulations that differ between locations for trade of cannabis among growers, dispensaries, and collectives. The Dutch OMC provides the following guidelines for documentation.

## Security (modified from OMC 2003)

- The buildings in which cannabis is cultivated, processed, packaged and stored must be sufficiently secured, only allowing authorized personnel access to the buildings.
- Personnel involved in the production process of cannabis must be authorized for that purpose by the employer.
- Waste must be stored in such a way that the potential for theft is minimized.

## Growing and Harvesting Guidelines (OMC 2003)

- Location of cultivation and the name of the supervising cultivator.
- Details on crops previously grown at that location.
- Nature, origin and quantity of the herbal starting materials.
- Chemicals and other substances used during cultivation, such as fertilizers, pesticides, and herbicides.
- Standard cultivation conditions, if applicable.
- Particular circumstances which occurred during cultivation, harvesting, and production that may affect the chemical composition, such as plant diseases or temporary departure from standard cultivation conditions, particularly during the harvesting period
- Nature and quantity of the yield.
- Date or dates and time or times of day when harvesting occurred.
- Drying conditions.
- Measures for pest control.

## Suppliers and Dispensaries

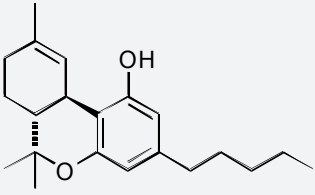
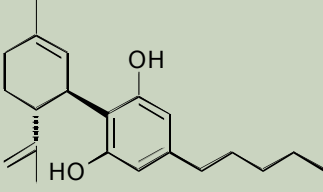
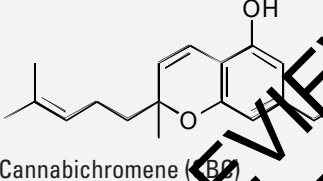
Cannabis supplied by dispensaries should be as fully characterized as possible with traceability and a verifiable chain of custody, to type of material, whether the plants were cultivated conventionally or organically, or was indoor or outdoor cultivated. Procedures should be implemented to ensure the absence of pesticides and raw material and finished product should be characterized as to its basic chemical profile (e.g.,  $\Delta^9$ -THC and/or CBD content). This information should be made available to patients upon request. Dispensary personnel should be appropriately trained in how to process and handle cannabis to ensure purity, maintain quality, and to morphologically identify material. The cannabis committee of the American Herbal Products Association (AHPA) has developed a set of draft guidelines outlining recommended practices for dispensaries and cultivators to follow (AHPA 2013a), and Americans for Safe Access (ASA) has developed a industry certification program for dispensaries and cultivators (ASA PFC).

## CONSTITUENTS

To date, more than 750 different secondary metabolites have been identified in cannabis. The diversity of cannabis constituents encompasses numerous phytochemical classes, notably, cannabinoids, and a host of other secondary metabolites. These other compound classes include terpenoids, non-cannabinoid phenols, nitrogenous compounds, as well as other more common plant compounds, all of which are non-psychoactive. Cannabinoids are the most studied



**Table 6** Structure and activity of primary phytocannabinoids

Compound	Putative Medicinal Action
 <p><math>\Delta^9</math>-Tetrahydrocannabinol (<math>\Delta^9</math>-THC)</p>	<p><b>Primary psychotropic cannabinoid</b></p> <p>Activates PPAR-<math>\gamma</math> and TRPA1 at nano- and micromolar concentrations, respectively (Pertwee 2008).</p> <p>Analgesic via CB<sub>1</sub> and CB<sub>2</sub> agonism (active at ~20–40 nM) (Rahn and Hohmann 2009).</p> <p>Antiemetic (Haney et al. 2007; Hollister 1971; Machado et al. 2008).</p> <p>Anti-inflammatory, antioxidant (Hampson et al. 1998).</p> <p>Antipruritic, cholestatic jaundice (Neff et al. 2002).</p> <p>Benefits duodenal ulcers (Douthwaite 1947).</p> <p>Bronchodilatory (Williams et al. 1976).</p> <p>Muscle relaxant (Kavia et al. 2010).</p> <p>Reduces Alzheimer symptoms (Eubanks et al. 2006; Volkmar et al. 1997).</p>
 <p>Cannabidiol (CBD)</p>	<p><b>Non-psychotropic cannabinoid</b></p> <p>Anandamide (AEA) reuptake inhibitor (De Petrocellis et al. 2011).</p> <p>Analgesic (Davis and Hatoum 1983).</p> <p>Anticonvulsant (Jones et al. 2010).</p> <p>Antidepressant in rodents (Devo and Masty 2003).</p> <p>Anti-emetic (5HT1A agonist; 5 mg/kg ip) (Rock et al. 2010).</p> <p>Antifungal (ElSohly et al. 1982).</p> <p>Anti-inflammatory (Bong et al. 2011).</p> <p>Antagonizes effects of THC in humans (Pertwee 2008).</p> <p>Antioxidant (Hampson et al. 1998).</p> <p>Anxiolytic via 5HT1A agonism (Campos and Guimaraes 2008; Resstel et al. 2009; Russo et al. 2005).</p> <p>Decreases sebum/sebocytes proliferation (Biro et al. 2009).</p> <p>Effective against methicillin-resistant <i>Staphylococcus aureus</i> (MRSA) (Appendino et al. 2008).</p> <p>Increases adenosine A2A signaling (Carrier et al. 2006).</p> <p>Pro-apoptotic against breast cancer cell lines (Ligresti et al. 2006).</p> <p>Treatment of addiction (Xi et al. 2010).</p> <p>Treatment of psychosis (Russo et al. 2007).</p>
 <p>Cannabichromene (CBC)</p>	<p><b>Non-psychotropic cannabinoid</b></p> <p>Analgesic (weak) (Turner et al. 1980b).</p> <p>Anandamide reuptake inhibitor (weak) (De Petrocellis et al. 2008; Ligresti et al. 2006).</p> <p>Anti-inflammatory (Davis and Hatoum 1983).</p> <p>Antimicrobial (Turner and ElSohly 1981).</p> <p>TRPA1 agonist (De Petrocellis et al. 2008; Ligresti et al. 2006).</p>

PREVIEW OF COMPLETE MONOGRAPH 64 PAGES

## Standards Preparations

Cannabinoid standards are dissolved in methanol at a concentration of 1 mg/mL.

Note: All cannabinoid standards utilized in the development of this method were isolated at the University of Mississippi. There is limited availability of commercially prepared cannabinoid standards.

## Standards Solution Stability

CBD, CBG, and CBN are stable in methanol, both at room temperature and with freezing.  $\Delta^9$ -THC, THCV, and CBC methanolic solutions are stable only when frozen and acid compounds are only stable in a freezer. Due to their instability, acid compounds should be prepared cool and stored and shipped frozen.

## Reagent Preparation

Fast Blue reagent: Dissolve 0.5 g Fast Blue B salt (MP Biochemicals, LLS) in 100 mL distilled water.

Vanillin/H<sub>2</sub>SO<sub>4</sub>: Dissolve 6 g vanillin in 90 mL ethanol (95%). Add 10 mL of 98% H<sub>2</sub>SO<sub>4</sub>. This reagent is relatively unstable and is best to use fresh each time.

## Chromatographic Conditions

### Stationary Phase:

C18 (UV 254) TLC plates 150  $\mu$ m, 10 cm  $\times$  10 cm (Sorbent Technologies).

### Mobile Phase:

75:25 (v:v) methanol/water with 0.1% glacial acetic acid.

### Sample Application

Apply 5  $\mu$ L of the sample preparations and 2  $\mu$ L of the standards preparations on the plate as 5 mm bands 2 mm apart from each other. The application position should be 6 mm from the lower edge of the plate and at least 15 mm from the left and right edges of the plate. For visualization using both reagents, separate plates should be prepared.

## Development

Line a flat bottom chamber (14 cm  $\times$  14 cm  $\times$  8 cm) with a filter paper or chromatography paper. Add a sufficient amount (~25 mL) of the Mobile Phase solution to ensure that the filter paper is covered with at least 5 mm of the solution, and let saturate for 15 min. Measure and mark on the plate the developing distance 60 mm from the application position. Introduce the plate into the chamber, and allow the developing solvent to reach the mark. Remove the plate and dry for 2 min at 70 °C in an oven.

## Detection

Visualize the plates under UV 254 nm, then spray one set of the plates with the Fast Blue reagent and the other set of plates with the vanillin/H<sub>2</sub>SO<sub>4</sub> reagent, followed by visu-

**Table 7** R<sub>f</sub> values for cannabinoid standards

Phytocannabinoid	R <sub>f</sub>
CBC	0.21
$\Delta^9$ -THC	0.26
CBN	0.29
CBG	0.33
CBD	0.40
THCV	0.42
$\Delta^9$ -THCA	0.61
CBDA	0.70

Note: Due to its relatively high concentration in drug type samples,  $\Delta^9$ -THC can overlap with CBN. CBN is a degradation compound of  $\Delta^9$ -THC.

alization under white light. For basic identification of the primary cannabinoids, neither reagent can be used.

## Results

See Table 7 and refer to the chromatograms provided (Figure 17-9).

## High-Performance Liquid Chromatography (HPLC) for the Determination of Major Phytocannabinoids in Cannabis

This LC method was adopted from Swift et al. (2013) and can be used for quantitation of THCA-A,  $\Delta^9$ -THC, CBDA, CBD, CBGA, CBG, and CBN in cannabis preparations. The method was adapted from an earlier method developed by DeBacker et al. (2009), which also quantified  $\Delta^8$ -THC. The original method of DeBacker et al. (2009) was validated for cannabis raw material and fully validated using total error approach in accordance with ISO17025 and the guidelines of the French Society of Pharmaceutical Sciences and Techniques (SFSTP). This modified and optimized method of Swift et al. (2013) was subjected to validation for selectivity, linearity, accuracy, precision, and recovery according to the US Food and Drug Administration (FDA) guidance for bioanalytical method validation (FDA 2001).

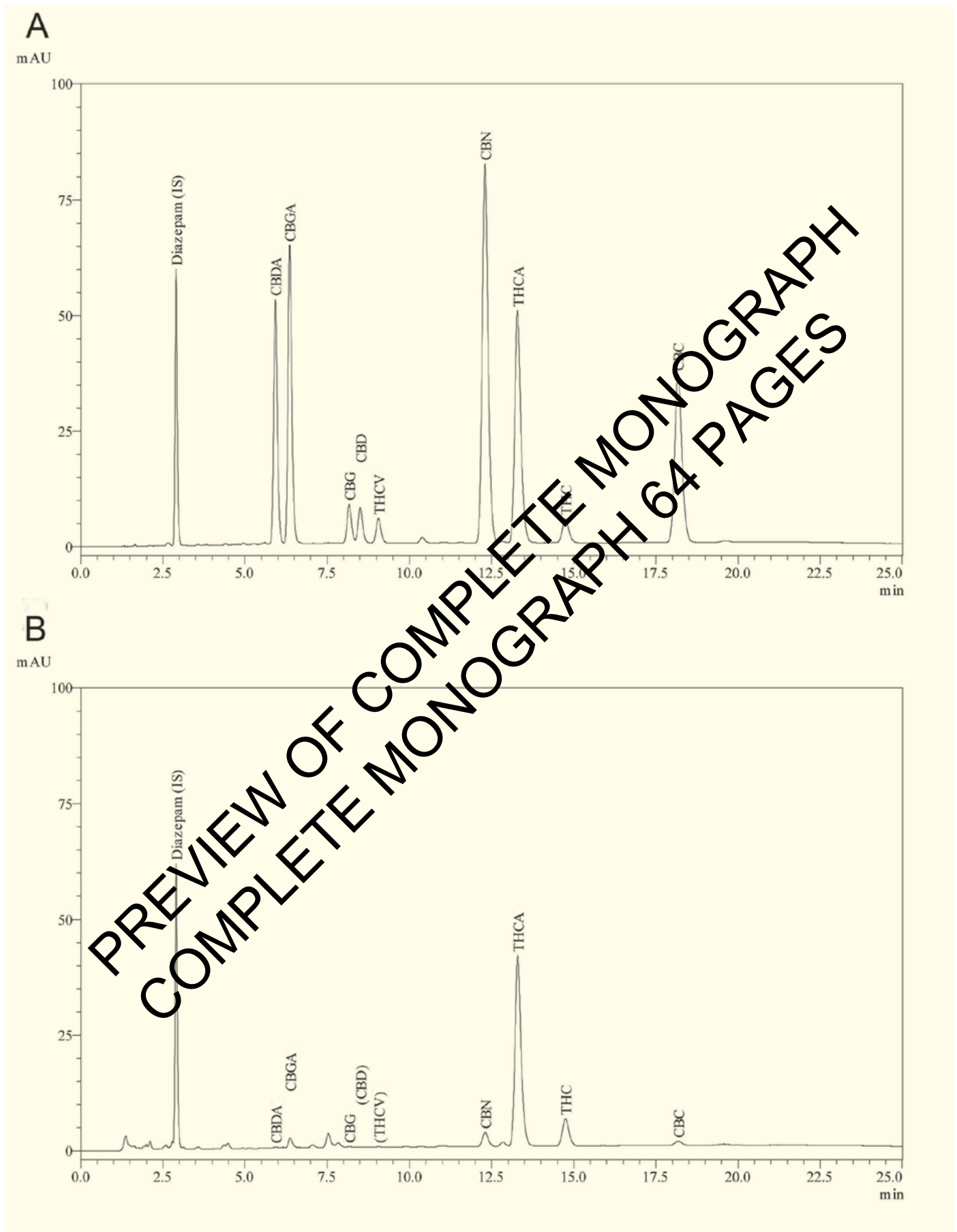
With appropriate modifications in sample preparations, the same chromatography can be used for the analysis of other cannabis materials (i.e. concentrates, extracts, foods). However, the robustness of this chromatography when applied to various matrices requires further validation (e.g., recovery, spiking experiments).

## Sample Preparation

### Crude Cannabis

Test samples are dried for 24 h in a 35 °C forced ventilation oven. Dried samples are ground to a fine powder. 200 mg of the sample is weighed in a glass vial and extracted with 10 mL of a mixture of methanol/chloroform (v/v: 9:1)

**Figure 18** Representative HPLC chromatograms of cannabinoid standards (A at 11 µg/mL) and cannabis raw material (B)



diode array detector. For routine use, a standard UV detector is suitable.

**Run time:**

30 min.

**Post-run time:**

6 min.

Note: CBD and CBG peaks may slightly overlap if present in high concentrations (> 10%).

**Quantitation**

Inject each standard preparation and generate a standard curve based on the peak area vs. concentration, as a ratio of standard to internal standard.

Cannabinoid contents in the sample are quantified using the linear equation based on least squares regression for each cannabinoid compound: ( $y = mx + c$ )

where:

$x$  = concentration of the individual cannabinoid in the sample ( $\mu\text{g/mL}$ );

$y$  = peak area of the individual cannabinoid;

$c$  = calculated y-intercept of the calibration curve;

$m$  = calculated slope of the calibration curve.

Using the concentration from the equation ( $y = mx + c$ ), total content ( $C_{\text{CBXT}}$ ) in the sample can be calculated as a sum of the concentrations of the neutral ( $C_{\text{CBXN}}$ ) and the acidic ( $C_{\text{CBXA}}$ ) components. A conversion factor of 0.877 is used for adjustment of the molar masses of THCA-A and CBDA; a conversion factor of 0.878 is used for CBGA; both after decarboxylation. These conversion factors may not apply for other cannabinoids:

$$C_{\text{CBXT}} = C_{\text{CBXN}} + C_{\text{CBXA}} \times 0.877$$

The individual cannabinoid content in the material is then calculated according to the following equation:

$$W_{\text{CBX(T)}} = \frac{C_{\text{CBX(T)}} \times V_{\text{sample}} \times D}{m_{\text{sample}} \times 10^6} \times 100\%$$

where:

$W_{\text{CBX(T)}}$  = (total) cannabinoid content in the material (% weight);

$C_{\text{CBX(T)}}$  = (total) cannabinoid content in the sample ( $\mu\text{g/mL}$ );

$V_{\text{sample}}$  = sample volume (mL);

$D$  = dilution factor;

$m_{\text{sample}}$  = sample mass (g).

**Calibration Range**

Linear from 2  $\mu\text{g/mL}$  to 100  $\mu\text{g/mL}$ . Extrapolations from this curve should not be made; however, cannabinoid concentrations in samples greater than 100  $\mu\text{g/mL}$  can be appropriately diluted, or the curve can be extended out to 1000  $\mu\text{g/mL}$  (with seven or more points in the curve) to ensure the reading is within the calibration range.

**Gas Chromatography with Flame Ionization Detection (GC-FID) for the Quantitation of Phytocannabinoids**

The following GC-FID method is used for the quantitation of the major phytocannabinoids of confiscated cannabis material submitted to the University of Mississippi by the DEA and other United States law enforcement agencies as part of NIDA's Marijuana Potency Monitoring Program (ElSohly et al. 2000; Mehmedic et al. 2010). Due to the high temperature of the GC injector port, in situ decarboxylation of the acidic cannabinoids occurs upon injection. This method, therefore, quantifies total cannabinoids (acidic and neutral) simultaneously. If quantitation of free (neutral) and acidic compounds is required for a specific cannabinoid, a non-destructive method, e.g., HPLC, or derivatization, e.g., silylation or formation of the alkylboronates, should be employed and validated.

**Sample Preparation**

**Grade cannabis and hashish:** To 100 mg of dried, powdered cannabis material with seeds and stems removed, add 3 mL of the internal standard solution (see below on the preparation instructions). Macerate for 1 hour at room temperature. Sonicate for 5 min. Filter the extract into GC vials, and cap the vials.

**Hash oil:** To 100 mg of hash oil, add 4 mL of hash oil extraction solution (see below). Macerate for a minimum of 2 h at room temperature. Sonicate for 5 min. Add 20 mL of absolute ethanol, and sonicate again for 5 min. Filter the extract into GC vials, and cap the vials.

**Internal Standard Preparation (use for extraction of cannabis and hashish)**

Dissolve 100 mg of 4-androstene-3,17-dione in 100 mL of 1:9 v/v chloroform/methanol mixture.

**Hash Oil Extraction Solution:** Dissolve 50 mg of 4-androstene-3,17-dione in 50 mL of absolute ethanol.

**Chromatographic Conditions**

**Column:**

DB-1: 15 m x 0.25 mm id x 0.25  $\mu\text{m}$  film (J&W Scientific, Inc, US).

**Table 10** Pesticides commonly used in cannabis cultivation

Pesticide	Use	Residue Analytical Methods (RAM) Environmental Protection Agency (EPA) <sup>1</sup> or Literature <sup>2</sup>
<b>Abamectin (Avermectins B1a and B1b)</b>	Insecticide/acaricide	LC-FLD <sup>1</sup> ; LC-MS/MS <sup>2</sup>
<b>Acequinocyl</b>	Insecticide/acaricide	LC/MS/MS <sup>1</sup>
<b>Bifenazate</b>	Acaricide	LC <sup>1</sup> ; LC-MS/MS <sup>2</sup>
<b>Bifenthrin (synthetic pyrethroid)</b>	Insecticide	GC-ECD <sup>1</sup> ; GC-MS/MS <sup>2</sup>
<b>Chlormequat chloride</b>	Plant growth regulator (PGR)	IC, LC-MS/MS <sup>2</sup>
<b>Cyfluthrin (synthetic pyrethroid)</b>	Insecticide	LC <sup>2</sup> (WHO 2004); GC-MS/MS <sup>2</sup>
<b>Daminozide (Alar)</b>	Plant growth regulator (PGR)	UV Spectroscopy <sup>1</sup> ; LC-MS/MS <sup>2</sup>
<b>Etoxazole</b>	Acaricide	GC-MS/(MS) <sup>1</sup>
<b>Fenoxycarb</b>	Insecticide	LC/UV <sup>1</sup> ; LC-MS/MS <sup>2</sup>
<b>Imazalil</b>	Fungicide	GC-ECD <sup>1</sup> ; LC-MS/MS <sup>2</sup>
<b>Imidacloprid</b>	Insecticide	LC-MS/MS <sup>2</sup>
<b>Myclobutanil</b>	Fungicide	GC-ECD; GC-NPD <sup>1</sup> ; GC-MS/MS <sup>2</sup> ; LC-MS/MS <sup>2</sup>
<b>Paclobutrazol</b>	Plant growth regulator (PGR); fungicide	LC-MS/MS <sup>2</sup>
<b>Pyrethrins*</b>	Insecticide	GC-ECD <sup>1</sup>
<b>Spinosad</b>	Insecticide	LC-MS/MS, immunoassay <sup>1</sup>
<b>Spiromesifen</b>	Insecticide	GC-MS <sup>2</sup> ; LC-MS/MS <sup>2</sup>
<b>Spirotetramat</b>	Insecticide	LC/LC-MS/MS <sup>2</sup>
<b>Trifloxystrobin</b>	Fungicide	GC-NPD <sup>1</sup> ; GC-MS/MS <sup>2</sup> ; LC-MS/MS <sup>2</sup>

ECD = Electron capture detector; FLD = Fluorescence detector; GC = Gas chromatography; HPLC = Liquid chromatography; IR = Infrared spectroscopy; MS = Mass spectrometry; NMR = Nuclear magnetic resonance; NPD = Nitrogen phosphorous detector.

\* Natural pyrethrins are tolerance exempt; synthetic pyrethrins are not.

Analytical Methods [RAM]) or those of the Food and Drug Administration (FDA Pesticide Analytical Manual [PAM]), should be employed when appropriate. However, as these tests were developed for commodity food products, the amount of sample needed may be prohibitive to apply to the cannabis industry. Alternatively, the food testing QuEChERS screen uses smaller quantities and may be more applicable to a variety, though not all, of cannabis products (Schoenberger<sup>2013</sup>, personal communication to AHP, unreferenced).

In the cannabis industry today, the most commonly used screening technology for organophosphates, organochlorines, carbamates, and ethylenediaminetetraacetic acid (EDTA) are immunoassays (e.g., enzyme-linked immunosorbent assays [ELISA]) and broad spectrum field tests that may or may not be validated for use on cannabis. Similarly, immunoassays for a broad range of PGRs and fungicides commonly used in cannabis cultivation are not available. Because of their relative inexpense, immunoassays are routinely used by analytical labs specializing in cannabis testing and are at high risk of not detecting pesticide residues and reporting samples to be “pesticide-free” or “non-detected”.

Before commercial use, any immunoassay should be validated against a standard testing methodology.

Table 10 provides a list of the most common pesticides (including acaricide, insecticides, fungicides, and plant growth regulators) used in cannabis production.

### Solvent Residues

Limits on solvents used in the manufacture of botanical products are established by the International Conference on Harmonization (ICH) (ICH 2011), with exceptions made for ethanol and acetic acid in products formulated to contain these substances (e.g., tinctures and vinegars). According to the ICH guideline, solvents are categorized in three classes. Class 1 includes known carcinogens, toxic substances, and environmental hazards such as benzene, carbon tetrachloride, 1,2-dichloroethane, 1,1-dichloroethene, and 1,1,1-trichloroethane. These are to be avoided in the manufacture of herbal and/or pharmaceutical products. Class 2 and 3 solvents (Table 12) are distinguished based on their relative toxicity level. Limits established for permissible daily exposures (PDE) are determined individually for Class 2 solvents. Limits for Class 3 solvents are set at a

## REFERENCES

- Adams R, Baker BR, Wearn RB. 1940a. Structure of cannabidiol. III. Synthesis of cannabidiol, 1-hydroxy-3-amyloxy-6,6,9-trimethyl-6-dibenzopyran. *J Am Chem Soc* 62:2204-7.
- Adams R, Hunt M, Clark JH. 1940b. Structure of cannabidiol, a product isolated from the marihuana extract of Minnesota wild hemp. *J Am Chem Soc* 62:196-200.
- Adams TC, Jones LA. 1975. Phytosterols of *Cannabis* smoke. *J Agr Food Chem* 23:352-3.
- Ahmed SA, Ross SA, Slade D, Radwan MM, Khan IA, ElSohly MA. 2008a. Structure determination and absolute configuration of cannabichromane derivatives from high potency *Cannabis sativa*. *Tetrahedron Lett* 49:6050-53.
- Ahmed SA, Ross SA, Slade D, Radwan MM, Zulficar F, ElSohly MA. 2008b. Cannabinoid ester constituents from high-potency *Cannabis sativa*. *J Nat Prod* 71:536-42.
- [AHPA] American Herbal Products Association. 2008. AHPA adopts new trade recommendation; guidance on heavy metal, microbiological limits. Silver Spring (MD): American Herbal Products Association. Available from: <http://www.ahpa.org>
- [AHPA] American Herbal Products Association. 2013a. Recommendations to regulators: cannabis dispensing operations. Silver Spring, MD. 12 p.
- [AHPA] American Herbal Products Association. 2013b. Recommendations to regulators: cannabis laboratory operations. Silver Spring, MD. 12 p.
- Alexander T. 1987. Hepatitis outbreak linked to imported pot. *Sinsemilla Tips* 7:5-2.
- Anderson LC. 1990. Leaf variation among *Cannabis* species from a controlled garden. *Botanical Museum Leaflets of Harvard University* 28:10.
- Appendino G, Chanese G, Tagliatalata-Scapano O. 2011. Cannabinoids: occurrence and medicinal chemistry. *Curr Med Chem* 18:1085-99.
- Appendino G, Gibbons S, Giana A, Pagani A, Grassi G, Stavri M, Smith E, Rahman MM. 2008. Antibacterial cannabinoids from *Cannabis sativa*: a structure-activity study. *J Nat Prod* 71:1427-30.
- [ASA PFC]. 2013. Americans for Safe Access, Patient Focused Certification. Americans for Safe Access, Washington, DC; <http://safeaccess2.org/sites/patientfocusedcertification/>. Accessed 12.2.13.
- Avraham Y, Ben-Shushan D, Breuer A, Zolotarev O, Okon A, Fink N, Katz V, Berry EM. 2004. Very low doses of  $\Delta^8$ -THC increase food consumption and alter neurotransmitter levels following weight loss. *Pharmacol Biochem Behav* 77:675-84.
- Banerjee SP, Snyder SH, Mechoulam R. 1975. Cannabinoids: influence on neurotransmitter uptake in rat brain synaptosomes. *J Pharmacol Exp Ther* 194:74-81.
- Barrett ML, Gordon D, Evans FJ. 1985. Isolation from *Cannabis sativa* L. of cannflavin—a novel inhibitor of prostaglandin production. *Biochem Pharm* 34:2019-24.
- Basile AC, Sertie JA, Freitas PC, Zanini AC. 1988. Anti-inflammatory activity of oleoresin from Brazilian *Copaifera*. *J Ethnopharmacol* 22:101-9.
- Bercht CAL, Lousberg RJJ, Kueppers FJEM, Salemink CA. 1974. *Cannabis*. IX. Cannabicitran. New naturally occurring tetracyclic diether from Lebanese *Cannabis sativa*. *Phytochemistry* 13:619-24.
- Bercht CAL, Lousberg RJJ, Kueppers FJEM, Salemink CA, van den TB, Van Rossum JM. 1973. *Cannabis*. VII. Identification of cannabidiol methyl ether from hashish. *J Chromatog B* 81:163-6.
- Bercht CAL, Paris MP. 1974. Oil of *Cannabis sativa*. *Bull Technique Cultivo* [68] 68:7-9.
- Bergamaschi MM, Queiroz RH, Chagas AL, de Oliveira DC, De Martinis BS, Kapczinski F, Quevedo J, Roesler R, Schroder N, Nardi AE, et al. 2011. Cannabidiol reduces the anxiety induced by simulated public speaking in treatment-naive social phobia patients. *Neuropsychopharmacology* 36:1219-26.
- Bertoli A, Tozzi S, Pistelli L, Angelini LG. 2010. Fibre hemp inflorescences: From crop-residues to essential oil production. *Ind Crops Prod* 32:329-37.
- Biro T, Toth BI, Hasko G, Paus R, Pacher P. 2009. The endocannabinoid system of the skin in health and disease: novel perspectives and therapeutic opportunities. *Trends Pharmacol Sci* 30:411-20.
- Bisogno T, Hanus L, De Petrocellis L, Tchilibon S, Ponde DE, Brandi I, Moriello AS, Davis JB, Mechoulam R, Di Marzo V. 2001. Molecular targets for cannabidiol and its synthetic analogues: effect on vanilloid VR1 receptors and on the cellular uptake and enzymatic hydrolysis of anandamide. *Br J Pharmacol* 134:845-52.
- Bocsa I, Mathe P, Hangyel L. 1997. Effect of nitrogen on by means of population genetics in a monoecious hemp stand. Tetrahydrocannabinol (THC) content in hemp (*Cannabis sativa* L.) leaves at different positions. *J Int Hemp Assoc* 4:80-1.
- Boeren EG, ElSohly MA, Turner CE. 1979. Cannabiripsol: a novel *Cannabis* constituent. *Experientia* 35:1278-9.
- Bolognini D, Costa B, Maiorini S, Comelli F, Marini P, Di Marzo V. 2010. The plant cannabinoid  $\Delta^9$ -tetrahydrocannabinol can decrease signs of inflammation and inflammatory pain in mice. *Br J Pharmacol* 160:77-87.
- Booker L, Naidu PS, Ruzicka RK, Mahoney A, Lichtman JH. 2009. Evaluation of prevalent phytochemicals in the acetic acid model of visceral nociception. *Drug Alcohol Depend* 105:42-7.
- Boroz G. 2011. Cannabidiol as emergent therapeutic strategy for lessening the impact of inflammation on oxidative stress. *Free Rad Biol Med* 51:1054-1061.
- Bowd A, Swann DA, Turnbull JH. 1975. Photochemical transformations of cannabidiol. *J Chem Soc Chem Comm* 19:797-8.
- Brenneisen R. 1984. Psychotropic drugs. II. Determination of cannabinoids in *Cannabis sativa* L. and in *Cannabis* products with high pressure liquid chromatography (HPLC). *Pharmaceut Acta Helv* 59:247-59.
- Brickell CD, Alexander C, David JC, Hettterscheid WLA, Leslie AC, Malecot V, Jin X, Cubey JJ, editors. 2009. New edition of the International Code of Nomenclature for cultivated plants. 8th ed: International Society for Horticultural Science. 204 p.
- Burstein SH. 1999. The cannabinoid acids: nonpsychoactive derivatives with therapeutic potential. *Pharmacol Ther* 82:87-96.
- Busse FB, Fiedler GF, Leichtle A, Hentschel H, Stumvoll M. 2008. Lead poisoning due to adulterated marijuana in Leipzig. *Disch Arztebl Int* 105:757-62.
- [CAEPA] California Environmental Protection Agency. 2013. Chemicals known to the state of California to cause cancer or reproductive toxicity. Sacramento (CA): California Environmental Protection Agency. 22 p.
- Cahn RS. 1932. *Cannabis indica* resin. III. Constitution of cannabidiol. *J Chem Soc* 1342-53.
- Campbell WE, Gammon DW, Smith P, Abrahams M, Purves TD. 1997. Composition and antimalarial activity in vitro of the essential oil of *Artemisia riparia*. *Planta Med* 63:27-32.
- Campbell WE, Guimaraes FS. 2008. Involvement of 5HT1A receptors in the anxiolytic-like effects of cannabidiol injected into the dorso-lateral periaqueductal gray nucleus. *Psychopharmacology (Berl)* 194:23-30.
- Carrini EA. 2004. The good and the bad effects of (-)-trans-delta-9-tetrahydrocannabinol ( $\Delta^9$ -THC) on humans. *Toxicol* 44:461-7.
- Carod-Artal FJ. 2003. Neurological syndromes associated with the ingestion of plants and fungi with a toxic component (II). Hallucinogenic fungi and plants, mycotoxins and medicinal herbs. *Rev Neurol* 36:951-60.
- Carrier EJ, Auchampach JA, Hillard CJ. 2006. Inhibition of an equilibrative nucleoside transporter by cannabidiol: a mechanism of cannabinoid immunosuppression. *Proc Natl Acad Sci USA* 103:7895-900.
- Cascio MG, Gauson LA, Stevenson LA, Ross R, Pertwee RG. 2010. Evidence that the plant cannabinoid cannabigerol is a highly potent alpha2-adrenoceptor agonist and moderately potent 5HT1A receptor antagonist. *Br J Pharmacol* 159:129-41.
- Cates WC, Warren JW. 1975. Hepatitis B in Nuremberg, Germany. Epidemiology of a drug-associated epidemic among US Army soldiers. *JAMA* 234:930-4.
- Cawthorne MA, Wargent E, Zaibi M, Stott C, Wright S. 2007. The CB1 antagonist, delta-9-tetrahydrocannabivarin (THCV) has antiobesity activity in dietary-induced obese (DIO) mice. Proceedings 17th Annual Symposium on the Cannabinoids; Saint-Sauveur, QC. International Cannabinoid Research Society p 141.
- [CDEA] California Department of Food and Agriculture. 2011. Notice of quarantine and removal



AMERICAN HERBAL PHARMACOPOEIA®

**Cannabis QC Order Form:**

Check Enclosed     Visa     Mastercard     AmEx     Discover

Number of Monographs: \_\_\_\_\_

(\$44.95 each) Subtotal Price \_\_\_\_\_ + CA Residents Tax 8.25% \_\_\_\_\_

Shipping \$5.70 per copy \_\_\_\_\_

Total \$ Amount \_\_\_\_\_

Print Name \_\_\_\_\_

\*Signature \_\_\_\_\_

Credit Card Number \_\_\_\_\_ Expiration Date \_\_\_\_\_

3 Digit Code on Back \_\_\_\_\_ Name on Card \_\_\_\_\_

Billing Address on Card \_\_\_\_\_

Contact & Company Name \_\_\_\_\_

Mailing Address \_\_\_\_\_ City \_\_\_\_\_

Zip Code \_\_\_\_\_ State \_\_\_\_\_ Country \_\_\_\_\_

Phone \_\_\_\_\_ Email \_\_\_\_\_

**Please Mail, Fax or Call in This Order To:**

American Herbal Pharmacopoeia®

PO Box 66809

Scotts Valley, CA 95067

[ahp@herbal-ahp.org](mailto:ahp@herbal-ahp.org) Fax: 831-438-2196 Phone: 831-461-6318